

Momentary model



- ▶ **Lightweight operation over the entire top surface**
- ▶ **Designed to withstand heavy loads**
- ▶ **Customer colours and logos available upon request**

Latching model



- ▶ **These switches may be used in multipedal configurations**
- ▶ **Snap contact and latching options**

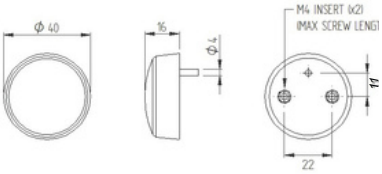
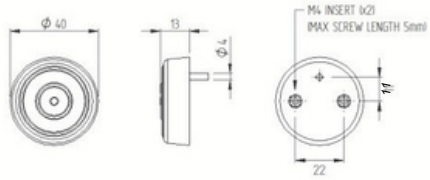
Specifications

Standards / Approvals	UL File No: E353500 · EN 60601-1:2007/A2:2021 · IEC 60601-1:2005+AMD1:2012+AMD2:2020 · CAN/CSA C22.2. No 60601-1:08 · CAN/CSA C22.2. No 60601-1-14/A1+A2:2022 · ANSI/AAMI ES60601-1:2005/A1:2012 +A2:2021 · IEC 60601-2-2: 2023 · IEC 60601-2-52: 2009/AMD1:2015 · CAN/CSA-C22.2 NO. 60601-2-52:11/AMD1:2017 · IEC 60601-2-43: 2022 · IEC 60601-2-46: 2023
Degree of protection	EN 60529 IP67 (IP68 upon request)
Connection method	Stripped cable cores or connector of your choice
Electrical rating	See table
Contact configuration	SPST N/O
Operating and storage temperature	+ 10°C to + 50°C
Body material	Thermoplastic
Weight	0.06 kg

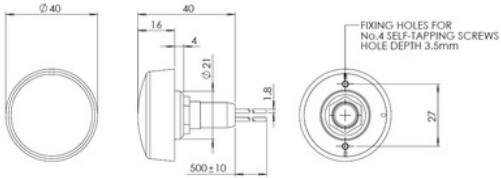


Dimensions

Momentary model



Latching model



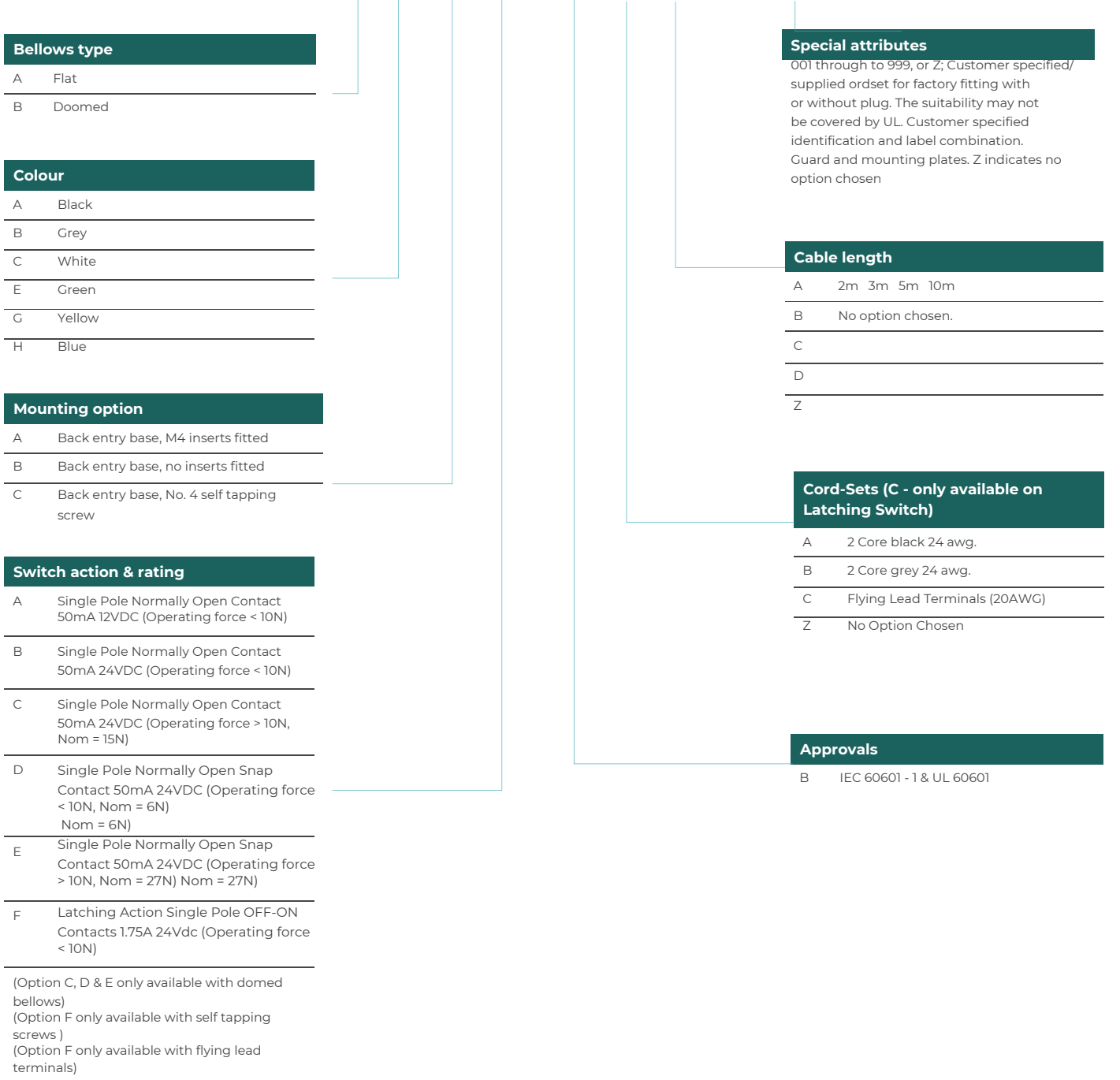
6241 BELLOW FOOTSWITCH / PALM SWITCH



Ordering information

(Please use the characters in the chart below to create your product code)

Sample Code 6241 - A A A A - B A A Z - X



Bellows type

A	Flat
B	Domed

Colour

A	Black
B	Grey
C	White
E	Green
G	Yellow
H	Blue

Mounting option

A	Back entry base, M4 inserts fitted
B	Back entry base, no inserts fitted
C	Back entry base, No. 4 self tapping screw

Switch action & rating

A	Single Pole Normally Open Contact 50mA 12VDC (Operating force < 10N)
B	Single Pole Normally Open Contact 50mA 24VDC (Operating force < 10N)
C	Single Pole Normally Open Contact 50mA 24VDC (Operating force > 10N, Nom = 15N)
D	Single Pole Normally Open Snap Contact 50mA 24VDC (Operating force < 10N, Nom = 6N) Nom = 6N)
E	Single Pole Normally Open Snap Contact 50mA 24VDC (Operating force > 10N, Nom = 27N) Nom = 27N)
F	Latching Action Single Pole OFF-ON Contacts 1.75A 24Vdc (Operating force < 10N)

(Option C, D & E only available with domed bellows)
(Option F only available with self tapping screws)
(Option F only available with flying lead terminals)

Special attributes

001 through to 999, or Z; Customer specified/supplied orset for factory fitting with or without plug. The suitability may not be covered by UL. Customer specified identification and label combination. Guard and mounting plates. Z indicates no option chosen

Cable length

A	2m 3m 5m 10m
B	No option chosen.
C	
D	
Z	

Cord-Sets (C - only available on Latching Switch)

A	2 Core black 24 awg.
B	2 Core grey 24 awg.
C	Flying Lead Terminals (20AWG)
Z	No Option Chosen

Approvals

B	IEC 60601 - 1 & UL 60601
---	--------------------------



Australian Distributor
K. D. Fisher & Co. Pty Ltd ABN 27 007 879 647
 Head office 18 Benjamin Street St Marys SA
 5042 T +61 8 8277 3288 T 1300 533 474
 E kdf@kdfisher.com.au kdfisher.com.au

If you require a customized solution for your program contact our sales team.